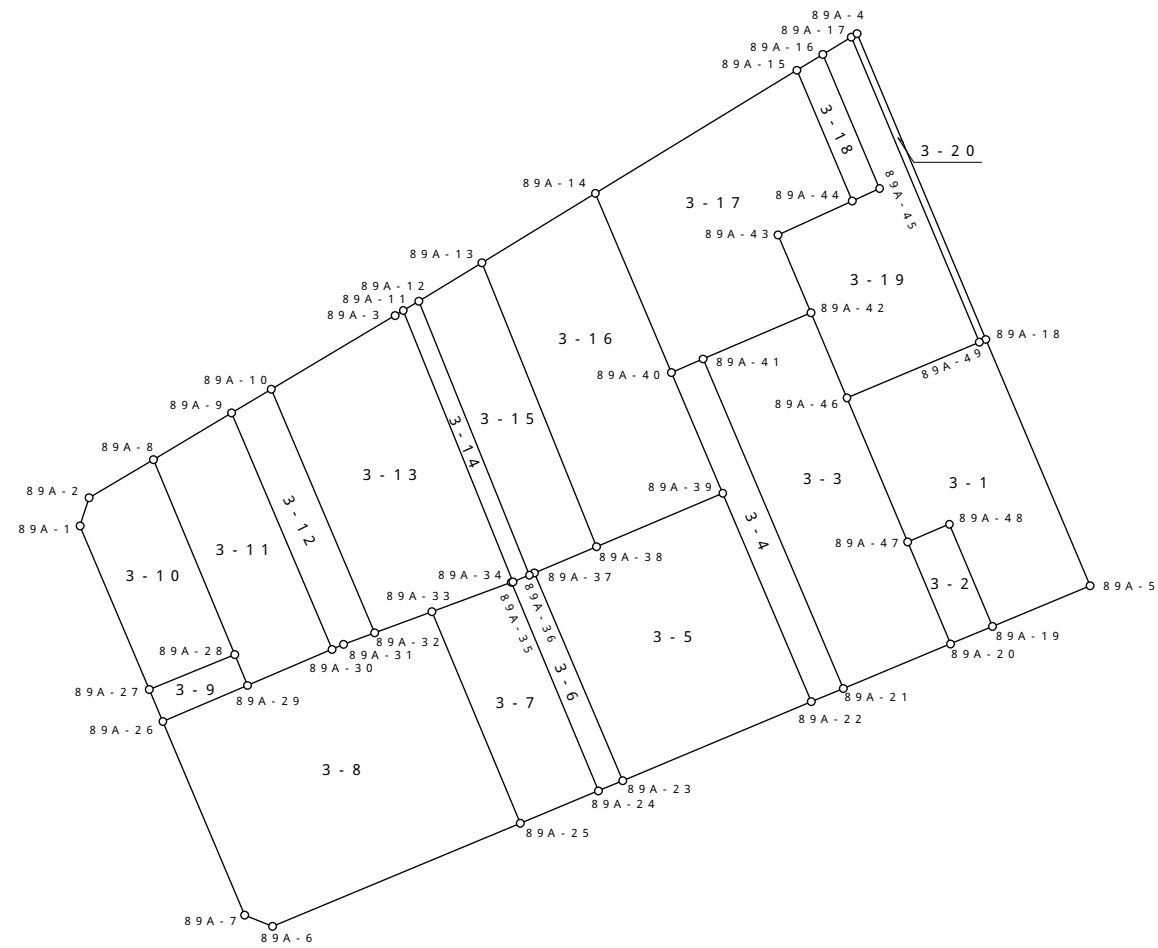
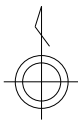


S = 1 : 500



**参考資料**  
※記載内容は換地処分当時のものです。 上尾市

面積（座標法）計算書

地番 = 3-1  
測点名

	[1] X(i)	[2] X(i+1)-X(i-1)	[3] Y(i)	[4] Y(i+1)-Y(i-1)	[2]*[3]	[1]*[4]	方向角	夾 角	距 離
89A-18	-3761.167	-16.113	-22596.499	7.314	364097.388387	-27509.175438	157-04-19	90-06-23	17.688
89A-5	-3777.458	-18.978	-22589.608	0.437	428705.580624	-1650.749146	247-23-47	89-40-32	6.991
89A-19	-3780.145	4.074	-22596.062	-9.294	-92056.356588	35132.667630	337-12-53	90-10-54	7.333
89A-48	-3773.384	5.595	-22598.902	-5.611	-126440.856690	21172.457624	247-10-45	270-02-08	3.006
89A-47	-3774.550	8.351	-22601.673	-6.774	-188746.571223	25568.801700	337-11-15	89-59-30	10.325
89A-46	-3765.033	13.205	-22605.676	4.751	-298507.951580	-17887.671783	67-09-17	90-01-58	9.499
89A-49	-3761.345	3.866	-22596.922	9.177	-87359.700452	-34517.863065	67-10-42	179-58-35	0.459
合計				倍面積	-308.467522	308.467522			55.301
				面 積	154.23	154.23			

面積（座標法）計算書

地番 = 3-2  
測点名

	[1] X(i)	[2] X(i+1)-X(i-1)	[3] Y(i)	[4] Y(i+1)-Y(i-1)	[2]*[3]	[1]*[4]	方向角	夾 角	距 離
89A-48	-3773.384	-5.595	-22598.902	5.611	126440.856690	-21172.457624	157-12-53	89-57-52	7.333
89A-19	-3780.145	-7.914	-22596.062	0.071	178825.234668	-268.390295	247-23-36	89-49-17	2.999
89A-20	-3781.298	5.595	-22598.831	-5.611	-126440.459445	21216.863078	337-09-40	90-13-56	7.322
89A-47	-3774.550	7.914	-22601.673	-0.071	-178869.640122	267.993050	67-10-45	89-58-55	3.006
合計				倍面積	-44.008209	44.008209			20.660
				面 積	22.00	22.00			

面積（座標法）計算書

地番 = 3-3  
測点名

	[1] X(i)	[2] X(i+1)-X(i-1)	[3] Y(i)	[4] Y(i+1)-Y(i-1)	[2]*[3]	[1]*[4]	方向角	夾 角	距 離
89A-42	-3759.397	-2.573	-22608.061	9.505	58170.540953	-35733.068485	157-03-48	89-39-34	6.120
89A-46	-3765.033	-15.153	-22605.676	6.388	342543.808428	-24051.030804	157-11-15	179-52-33	10.325
89A-47	-3774.550	-16.265	-22601.673	6.845	367616.211345	-25836.794750	157-09-40	180-01-35	7.322
89A-20	-3781.298	-9.696	-22598.831	-4.248	219118.265376	16062.953904	247-25-21	89-44-19	7.678
89A-21	-3784.246	18.838	-22605.921	-16.350	-425850.339798	61872.422100	336-58-21	90-27-00	23.672
89A-41	-3762.460	24.849	-22615.181	-2.140	-561964.632669	8051.664400	66-43-22	90-14-59	7.751
合計				倍面積	-366.146365	366.146365			62.868
				面 積	183.07	183.07			

面積（座標法）計算書

地番 = 3-4  
測点名

	[1] X(i)	[2] X(i+1)-X(i-1)	[3] Y(i)	[4] Y(i+1)-Y(i-1)	[2]*[3]	[1]*[4]	方向角	夾 角	距 離
89A-41	-3762.460	-20.885	-22615.181	11.362	472318.055185	-42749.070520	156-58-21	89-49-32	23.672
89A-21	-3784.246	-22.661	-22605.921	7.154	512272.775781	-27072.495884	247-26-17	89-32-04	2.281
89A-22	-3785.121	12.909	-22608.027	-7.967	-291847.020543	30156.059007	336-57-53	90-28-24	14.978
89A-39	-3771.337	21.760	-22613.888	-9.256	-492078.202880	34907.495272	336-56-34	180-01-19	8.668
89A-40	-3763.361	8.877	-22617.283	-1.293	-200773.621191	4866.025773	66-47-53	90-08-41	2.287
合計				倍面積	-108.013648	108.013648			51.886
				面 積	54.00	54.00			

面積（座標法）計算書

地番 = 3-5  
測点名

	[1] X(i)	[2] X(i+1)-X(i-1)	[3] Y(i)	[4] Y(i+1)-Y(i-1)	[2]*[3]	[1]*[4]	方向角	夾 角	距 離
89A-39	-3771.337	-10.249	-22613.888	14.209	231769.738112	-53586.927433	156-57-53	90-05-05	14.978
89A-22	-3785.121	-19.007	-22608.027	-6.616	429710.769189	25042.360536	247-17-07	89-40-46	13.526
89A-23	-3790.344	8.510	-22620.504	-18.325	-192500.489040	69458.053800	336-56-02	90-21-05	14.926
89A-37	-3776.611	15.472	-22626.352	-1.732	-350074.918144	6541.090252	67-05-46	89-50-16	4.468
89A-38	-3774.872	5.274	-22622.236	12.464	-119309.672664	-47050.004608	67-02-58	180-02-48	9.066
合計				倍面積	-404.572547	404.572547			56.964
				面 積	202.28	202.28			

面積（座標法）計算書

地番 = 3-6  
測点名

	[1] X(i)	[2] X(i+1)-X(i-1)	[3] Y(i)	[4] Y(i+1)-Y(i-1)	[2]*[3]	[1]*[4]	方向角	夾 角	距 離
89A-37	-3776.611	-13.597	-22626.352	6.165	307650.508144	-23282.806815	156-56-02	89-50-45	14.926
89A-23	-3790.344	-14.401	-22620.504	4.247	325757.878104	-16097.590968	247-21-08	89-34-54	1.735
89A-24	-3791.012	13.110	-22622.105	-7.355	-296575.796550	27882.893260	337-20-01	90-01-07	14.931
89A-34	-3777.234	13.812	-22627.859	-5.659	-312535.988508	21375.367206	70-18-29	87-01-32	0.101
89A-35	-3777.200	0.487	-22627.764	1.190	-11019.721068	-4494.868000	67-31-31	182-46-58	1.185
89A-36	-3776.747	0.589	-22626.669	1.412	-13327.108041	-5332.766764	66-46-47	180-44-44	0.345
合計				倍面積	-50.227919	50.227919			33.223
				面 積	25.11	25.11			

面積（座標法）計算書

地番 = 3-7  
測点名

	[1] X(i)	[2] X(i+1)-X(i-1)	[3] Y(i)	[4] Y(i+1)-Y(i-1)	[2]*[3]	[1]*[4]	方向角	夾 角	距 離
89A-34	-3777.234	-11.838	-22627.859	11.004	267868.594842	-41564.682936	157-20-01	92-23-09	14.931
89A-24	-3791.012	-15.930	-22622.105	0.594	360370.132650	-2251.861128	247-21-40	89-58-21	5.591
89A-25	-3793.164	11.838	-22627.265	-11.004	-267861.563070	41739.976656	337-19-42	90-01-58	15.162
89A-33	-3779.174	15.930	-22633.109	-0.594	-360545.426370	2244.829356	69-43-10	87-36-32	5.597
合計				倍面積	-168.261948	168.261948			41.281
				面 積	84.13	84.13			



面積（座標法）計算書

地番 = 3-8  
測点名

	[1] X(i)	[2] X(i+1)-X(i-1)	[3] Y(i)	[4] Y(i+1)-Y(i-1)	[2]*[3]	[1]*[4]	方向角	夾 角	距 離
89A-33	-3779.174	-12.593	-22633.109	9.646	285018.741637	-36453.912404	157-19-42	92-29-47	15.162
89A-25	-3793.164	-20.811	-22627.265	-10.553	470896.011915	40029.259692	247-24-47	89-54-55	17.759
89A-6	-3799.985	-6.076	-22643.662	-18.229	137582.890312	69269.926565	292-07-46	135-17-01	1.978
89A-7	-3799.240	13.557	-22645.494	-7.246	-307004.962158	27529.293040	337-05-33	135-02-13	13.909
89A-26	-3786.428	15.193	-22650.908	0.188	-344135.245244	-711.848464	66-58-24	90-07-09	6.087
89A-29	-3784.047	4.767	-22645.306	11.180	-107950.173702	-42305.645460	66-50-28	180-07-56	6.067
89A-30	-3781.661	2.721	-22639.728	6.352	-61602.699888	-24021.110672	66-35-46	180-14-42	0.843
89A-31	-3781.326	1.090	-22638.954	2.817	-24676.459860	-10651.995342	69-43-05	176-52-41	2.178
89A-32	-3780.571	2.152	-22636.911	5.845	-48714.632472	-22097.437495	69-49-29	179-53-36	4.051
合計				倍面積	-586.529460	586.529460			68.034
				面 積	293.26	293.26			

面積（座標法）計算書

地番 = 3-9  
測点名

	[1] X(i)	[2] X(i+1)-X(i-1)	[3] Y(i)	[4] Y(i+1)-Y(i-1)	[2]*[3]	[1]*[4]	方向角	夾 角	距 離
89A-28	-3782.015	0.267	-22646.154	6.498	-6046.523118	-24575.533470	157-20-53	90-30-37	2.202
89A-29	-3784.047	-4.413	-22645.306	-4.754	99933.735378	17989.359438	246-58-24	90-22-29	6.087
89A-26	-3786.428	-0.267	-22650.908	-6.498	6047.792436	24604.209144	337-01-51	89-56-33	2.296
89A-27	-3784.314	4.413	-22651.804	4.754	-99962.411052	-17990.628756	67-51-30	89-10-21	6.100
合計				倍面積	-27.406356	27.406356			16.685
				面 積	13.70	13.70			

面積（座標法）計算書

地番 = 3-10  
測点名

	[1] X(i)	[2] X(i+1)-X(i-1)	[3] Y(i)	[4] Y(i+1)-Y(i-1)	[2]*[3]	[1]*[4]	方向角	夾 角	距 離
89A-8	-3769.114	-10.377	-22651.537	9.628	235054.999449	-36289.029592	157-21-05	81-54-49	13.979
89A-28	-3782.015	-15.200	-22646.154	-0.267	344221.540800	1009.798005	247-51-30	89-29-35	6.100
89A-27	-3784.314	8.510	-22651.804	-10.230	-192766.852040	38713.532220	337-02-12	90-49-18	11.739
89A-1	-3773.505	12.676	-22656.384	-3.978	-287192.323584	15011.002890	17-52-17	139-09-55	1.962
89A-2	-3771.638	4.391	-22655.782	4.847	-99481.538762	-18281.129386	59-15-54	138-36-23	4.939
合計				倍面積	-164.174137	164.174137			38.719
				面 積	82.08	82.08			

面積（座標法）計算書

地番 = 3-11  
測点名

	[1] X(i)	[2] X(i+1)-X(i-1)	[3] Y(i)	[4] Y(i+1)-Y(i-1)	[2]*[3]	[1]*[4]	方向角	夾 角	距 離
89A-9	-3766.026	-12.547	-22646.360	11.809	284143.878920	-44473.001034	157-00-52	82-10-12	16.983
89A-30	-3781.661	-18.021	-22639.728	1.054	407990.538288	-3985.870694	246-50-28	90-10-24	6.067
89A-29	-3784.047	-0.354	-22645.306	-6.426	8016.438324	24316.286022	337-20-53	89-29-35	2.202
89A-28	-3782.015	14.933	-22646.154	-6.231	-338175.017682	23565.735465	337-21-05	179-59-48	13.979
89A-8	-3769.114	15.989	-22651.537	-0.206	-362175.425093	776.437484	59-11-04	98-10-01	6.028
合計				倍面積	-199.587243	199.587243			45.259
				面 積	99.79	99.79			

面積（座標法）計算書

地番 = 3-12  
測点名

	[1] X(i)	[2] X(i+1)-X(i-1)	[3] Y(i)	[4] Y(i+1)-Y(i-1)	[2]*[3]	[1]*[4]	方向角	夾 角	距 離
89A-10	-3764.465	-14.545	-22643.741	9.449	329353.212845	-35570.429785	157-01-12	82-11-02	17.494
89A-32	-3780.571	-16.861	-22636.911	4.787	381680.956371	-18097.593377	249-43-05	87-18-07	2.178
89A-31	-3781.326	-1.090	-22638.954	-2.817	24676.459860	10651.995342	246-35-46	183-07-19	0.843
89A-30	-3781.661	15.300	-22639.728	-7.406	-346387.838400	28006.981366	337-00-52	89-34-54	16.983
89A-9	-3766.026	17.196	-22646.360	-4.013	-389426.806560	15113.062338	59-12-14	97-48-38	3.049
合計				倍面積	-104.015884	104.015884			40.547
				面 積	52.00	52.00			

面積（座標法）計算書

地番 = 3-13  
測点名

	[1] X(i)	[2] X(i+1)-X(i-1)	[3] Y(i)	[4] Y(i+1)-Y(i-1)	[2]*[3]	[1]*[4]	方向角	夾 角	距 離
89A-11	-3759.255	-17.616	-22635.011	7.786	398738.353776	-29269.559430	158-00-32	80-35-30	19.353
89A-35	-3777.200	-17.979	-22627.764	7.152	406824.568956	-27014.534400	250-18-29	87-42-03	0.101
89A-34	-3777.234	-1.974	-22627.859	-5.345	44667.393666	20189.315730	249-43-10	180-35-19	5.597
89A-33	-3779.174	-3.337	-22633.109	-9.052	75526.684733	34209.083048	249-49-29	179-53-41	4.051
89A-32	-3780.571	14.709	-22636.911	-10.632	-332966.323899	40195.030872	337-01-12	92-48-17	17.494
89A-10	-3764.465	20.987	-22643.741	1.361	-475224.192367	-5123.436865	59-12-34	97-48-38	9.535
89A-3	-3759.584	5.210	-22635.550	8.730	-117931.215500	-32821.168320	58-36-02	180-36-32	0.631
合計				倍面積	-364.730635	364.730635			56.762
				面 積	182.36	182.36			

面積（座標法）計算書

地番 = 3-14  
測点名

	[1] X(i)	[2] X(i+1)-X(i-1)	[3] Y(i)	[4] Y(i+1)-Y(i-1)	[2]*[3]	[1]*[4]	方向角	夾 角	距 離
89A-12	-3758.632	-17.492	-22633.989	8.342	395913.735588	-31354.508144	157-59-50	80-38-12	19.538
89A-36	-3776.747	-18.568	-22626.669	6.225	420131.989992	-23510.250075	247-31-31	90-28-19	1.185
89A-35	-3777.200	17.492	-22627.764	-8.342	-395804.847888	31509.402400	338-00-32	89-30-59	19.353
89A-11	-3759.255	18.568	-22635.011	-6.225	-420286.884248	23401.362375	58-38-02	99-22-30	1.197
合計				倍面積	-46.006556	46.006556			41.273
				面 積	23.00	23.00			

面積（座標法）計算書

地番 = 3-15  
測点名

	[1] X(i)	[2] X(i+1)-X(i-1)	[3] Y(i)	[4] Y(i+1)-Y(i-1)	[2]*[3]	[1]*[4]	方向角	夾 角	距 離
89A-13	-3756.092	-16.240	-22629.820	11.753	367508.276800	-44145.349276	158-00-34	80-38-18	20.254
89A-38	-3774.872	-20.519	-22622.236	3.468	464185.660484	-13091.256096	247-05-46	90-54-48	4.468
89A-37	-3776.611	-1.875	-22626.352	-4.433	42424.410000	16741.716563	246-46-47	180-18-59	0.345
89A-36	-3776.747	17.979	-22626.669	-7.637	-406804.881951	28843.016839	337-59-50	88-46-57	19.538
89A-12	-3758.632	20.655	-22633.989	-3.151	-467505.042795	11843.449432	58-38-52	99-20-58	4.882
合計				倍面積	-191.577462	191.577462			49.487
				面 積	95.78	95.78			



面積（座標法）計算書

地番 = 3-16  
測点名

	[1] X(i)	[2] X(i+1)-X(i-1)	[3] Y(i)	[4] Y(i+1)-Y(i-1)	[2]*[3]	[1]*[4]	方向角	夾 角	距 離
89A-14	-3751.505	-7.269	-22622.312	12.537	164441.585928	-47032.618185	157-00-53	81-33-45	12.878
89A-40	-3763.361	-19.832	-22617.283	8.424	448545.956456	-31702.553064	156-56-34	180-04-19	8.668
89A-39	-3771.337	-11.511	-22613.888	-4.953	260308.464768	18679.432161	247-02-58	89-53-36	9.066
89A-38	-3774.872	15.245	-22622.236	-15.932	-344875.987820	60141.260704	338-00-34	89-02-24	20.254
89A-13	-3756.092	23.367	-22629.820	-0.076	-528791.003940	285.462992	58-34-38	99-25-56	8.798
合計				倍面積	-370.984608	370.984608			59.664
				面 積	185.49	185.49			

面積（座標法）計算書

地番 = 3-17  
測点名

	[1] X(i)	[2] X(i+1)-X(i-1)	[3] Y(i)	[4] Y(i+1)-Y(i-1)	[2]*[3]	[1]*[4]	方向角	夾 角	距 離
89A-15	-3743.371	-0.514	-22608.990	16.979	11621.020860	-63558.696209	157-04-40	81-30-55	9.389
89A-44	-3752.019	-10.894	-22605.333	-1.251	246262.497702	4693.775769	245-24-37	91-40-03	5.397
89A-43	-3754.265	-7.378	-22610.241	-2.728	166818.358098	10241.634920	156-59-06	268-25-31	5.576
89A-42	-3759.397	-8.195	-22608.061	-4.940	185273.059895	18571.421180	246-43-22	90-15-44	7.751
89A-41	-3762.460	-3.964	-22615.181	-9.222	89646.577484	34697.406120	246-47-53	179-55-29	2.287
89A-40	-3763.361	10.955	-22617.283	-7.131	-247772.335265	26836.527291	337-00-53	89-47-00	12.878
89A-14	-3751.505	19.990	-22622.312	8.293	-452220.016880	-31111.230965	58-35-35	98-25-18	15.609
合計				倍面積	-370.838106	370.838106			58.887
				面 積	185.41	185.41			

面積（座標法）計算書

地番 = 3-18  
測点名

	[1] X(i)	[2] X(i+1)-X(i-1)	[3] Y(i)	[4] Y(i+1)-Y(i-1)	[2]*[3]	[1]*[4]	方向角	夾 角	距 離
89A-16	-3742.319	-7.816	-22607.264	5.474	176698.375424	-20485.454206	157-05-20	81-32-55	9.628
89A-45	-3751.187	-9.700	-22603.516	1.931	219254.105200	-7243.542097	245-23-49	91-41-31	1.998
89A-44	-3752.019	7.816	-22605.333	-5.474	-176683.282728	20538.552006	337-04-40	88-19-09	9.389
89A-15	-3743.371	9.700	-22608.990	-1.931	-219307.203000	7228.449401	58-38-15	98-26-25	2.021
合計				倍面積	-38.005104	38.005104			23.036
				面 積	19.00	19.00			

面積（座標法）計算書

地番 = 3-19  
測点名

	[1] X(i)	[2] X(i+1)-X(i-1)	[3] Y(i)	[4] Y(i+1)-Y(i-1)	[2]*[3]	[1]*[4]	方向角	夾 角	距 離
89A-17	-3741.182	-19.026	-22605.398	10.342	430090.302348	-38691.304244	157-11-58	81-26-44	21.872
89A-49	-3761.345	-23.851	-22596.922	-0.278	538959.186622	1045.653910	247-09-17	90-02-41	9.499
89A-46	-3765.033	1.948	-22605.676	-11.139	-44035.856848	41938.702587	337-03-48	90-05-29	6.120
89A-42	-3759.397	10.768	-22608.061	-4.565	-243443.600848	17161.647305	336-59-06	180-04-42	5.576
89A-43	-3754.265	7.378	-22610.241	2.728	-166818.358098	-10241.634920	65-24-37	91-34-29	5.397
89A-44	-3752.019	3.078	-22605.333	6.725	-69579.214974	-25232.327775	65-23-49	180-00-48	1.998
89A-45	-3751.187	9.700	-22603.516	-1.931	-219254.105200	7243.542097	337-05-20	268-18-29	9.628
89A-16	-3742.319	10.005	-22607.264	-1.882	-226185.676320	7043.044358	58-38-42	98-26-38	2.185
合計				倍面積	-267.323318	267.323318			62.275
				面 積	133.66	133.66			

面積（座標法）計算書

地番 = 3-20  
測点名

	[1] X(i)	[2] X(i+1)-X(i-1)	[3] Y(i)	[4] Y(i+1)-Y(i-1)	[2]*[3]	[1]*[4]	方向角	夾 角	距 離
89A-4	-3740.943	-19.985	-22605.005	8.899	451761.024925	-33290.651757	157-11-20	81-30-20	21.940
89A-18	-3761.167	-20.402	-22596.499	8.083	461013.772598	-30401.512861	247-10-42	90-00-38	0.459
89A-49	-3761.345	19.985	-22596.922	-8.899	-451599.486170	33472.209155	337-11-58	89-58-44	21.872
89A-17	-3741.182	20.402	-22605.398	-8.083	-461195.329996	30239.974106	58-41-40	98-30-18	0.460
合計				倍面積	-20.018643	20.018643			44.731
				面 積	10.00	10.00			