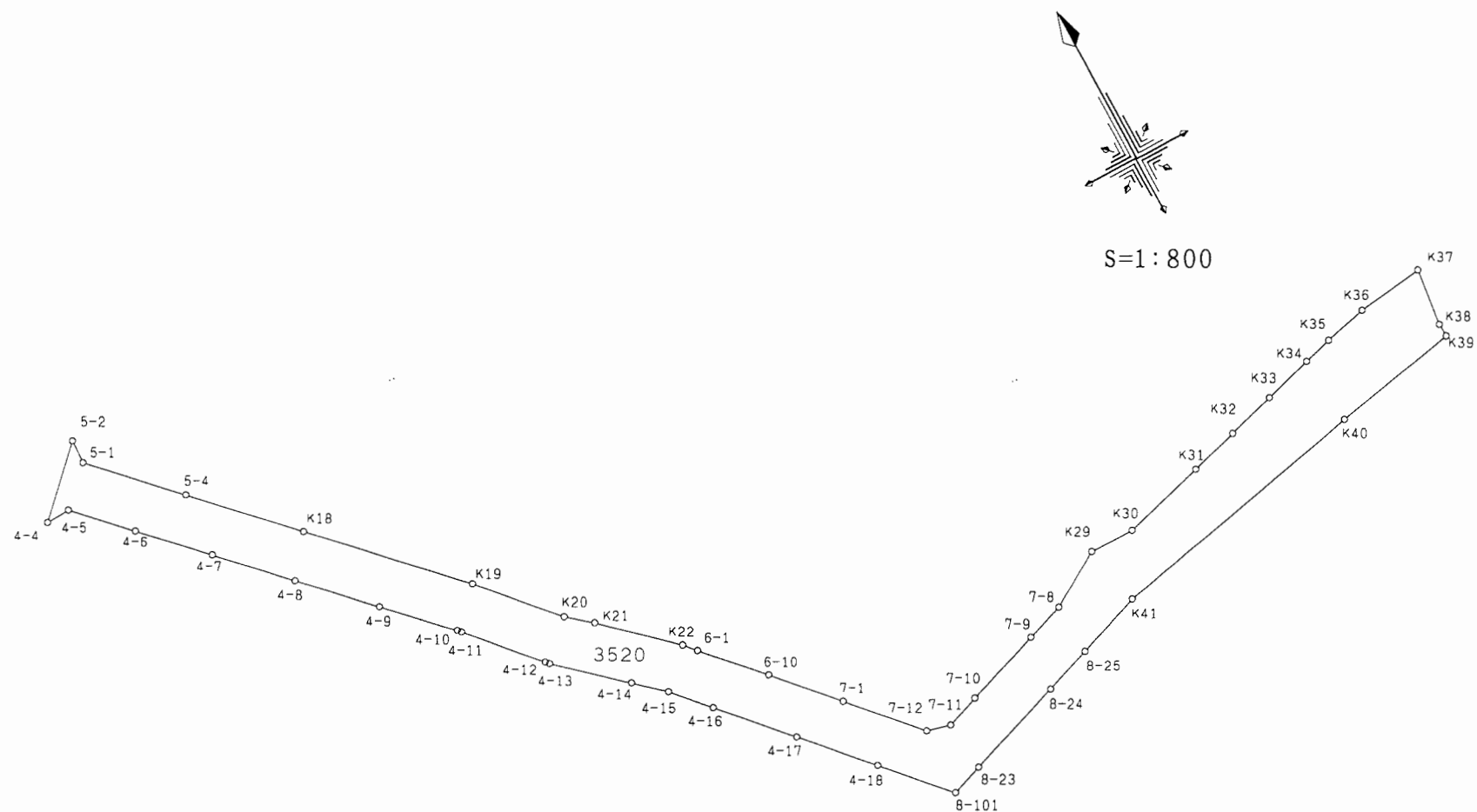


# 上尾市中平塚土地区画整理事業出来形確認測量

## 画地原子図

平成十六年六月



### 参考資料

※記載内容は換地処分当時のものです。 上尾市

# 画地面積計算書

現場名：上尾市中平塚区画整理地内

画地番号：3520

## 参考資料

※記載内容は換地処分当時のものです。上尾市

点名	Xn	Yn	距離	方向角	測角	Xn+1-Xn-1	Yn+1-Yn-1	Yn*(Xn+1-Xn-1)	Xn*(Yn+1-Yn-1)
4-4	-1541.695	-20416.015	2.991	87° 47' 24"	42° 27' 44"	-7.203	-4.415	147056.556045	6806.583425
4-5	-1541.579	-20413.027	8.619	135° 41' 49"	227° 54' 25"	-6.052	9.008	123539.639404	-13886.543632
4-6	-1547.747	-20407.007	9.862	135° 39' 44"	179° 57' 55"	-13.222	12.912	269821.446554	-19984.509264
4-7	-1554.801	-20400.115	10.460	135° 37' 57"	179° 58' 13"	-14.531	14.207	296434.071065	-22089.057807
4-8	-1562.278	-20392.800	10.761	135° 38' 23"	180° 00' 26"	-15.171	14.839	309379.168800	-23182.643242
4-9	-1569.972	-20385.276	9.833	135° 40' 31"	180° 02' 08"	-14.729	14.394	300254.730204	-22598.176968
4-10	-1577.007	-20378.406	0.563	138° 35' 10"	182° 54' 39"	-7.457	7.243	151961.773542	-11422.261701
4-11	-1577.429	-20378.033	10.777	138° 29' 02"	179° 53' 52"	-8.492	7.516	173050.256236	-11855.956364
4-12	-1585.499	-20370.890	0.565	138° 58' 08"	180° 29' 06"	-8.496	7.514	173071.081440	-11913.439486
4-13	-1585.925	-20370.519	10.169	131° 50' 16"	172° 52' 08"	-7.209	7.947	146851.071471	-12603.345975
4-14	-1592.708	-20362.943	4.602	131° 50' 18"	180° 00' 02"	-9.852	11.005	200615.714436	-17527.751540
4-15	-1595.777	-20359.514	5.735	137° 44' 51"	185° 54' 33"	-7.314	7.285	148909.485396	-11625.235445
4-16	-1600.022	-20355.658	10.817	137° 47' 34"	180° 02' 43"	-12.257	11.123	249499.300106	-17797.044706
4-17	-1608.034	-20348.391	10.549	137° 42' 23"	179° 54' 49"	-15.816	14.366	321830.152056	-23101.016444
4-18	-1615.838	-20341.292	10.080	137° 42' 23"	180° 00' 00"	-15.260	13.882	310408.115920	-22431.063116
8-101	-1623.294	-20334.509	4.177	70° 13' 54"	112° 31' 31"	-6.043	10.714	122881.437887	-17391.971916
8-23	-1621.881	-20330.578	12.888	70° 16' 20"	180° 02' 26"	5.763	16.062	-117165.121014	-26050.652622
8-24	-1617.531	-20318.447	6.275	70° 19' 16"	180° 02' 56"	6.463	18.039	-131318.122961	-29178.641709
8-25	-1615.418	-20312.539	8.558	69° 59' 56"	179° 40' 40"	5.040	13.950	-102375.196560	-22535.081100
K41	-1612.491	-20304.497	33.682	77° 57' 51"	187° 57' 55"	9.951	40.984	-202050.049647	-66086.331144
K40	-1605.467	-20271.555	16.007	79° 00' 33"	181° 02' 42"	10.076	48.655	-204256.188180	-78113.996885
K39	-1602.415	-20255.842	1.636	356° 36' 46"	97° 36' 13"	4.685	15.616	-94898.619770	-25023.312640
K38	-1600.782	-20255.939	7.168	7° 03' 51"	190° 27' 05"	8.747	0.785	-177178.698433	-1256.613870
K37	-1593.668	-20255.057	8.392	262° 26' 14"	75° 22' 23"	6.010	-7.437	-121732.892570	11852.108916
K36	-1594.772	-20263.376	5.483	256° 22' 09"	173° 55' 55"	-2.397	-13.648	48571.312272	21765.448256
K35	-1596.065	-20268.705	3.715	254° 46' 13"	178° 24' 04"	-2.269	-8.913	45989.691645	14225.727345
K34	-1597.041	-20272.289	6.297	253° 50' 37"	179° 04' 24"	-2.728	-9.633	55302.804392	15384.295953
K33	-1598.793	-20278.338	6.197	254° 08' 09"	180° 17' 32"	-3.446	-12.010	69879.152748	19201.503930
K32	-1600.487	-20284.299	6.220	253° 57' 41"	179° 49' 32"	-3.412	-11.939	69210.028188	19108.214293
K31	-1602.205	-20290.277	10.650	254° 11' 19"	180° 13' 38"	-4.620	-16.225	93741.079740	25995.776125
K30	-1605.107	-20300.524	5.566	269° 59' 36"	195° 48' 17"	-2.903	-15.813	58932.421172	25381.556991
K29	-1605.108	-20306.090	7.827	239° 08' 12"	149° 08' 36"	-4.016	-12.285	81549.257440	19718.751780
7-8	-1609.123	-20312.809	4.992	250° 14' 39"	191° 06' 27"	-5.702	-11.417	115823.636918	18371.357291
7-9	-1610.810	-20317.507	10.048	250° 17' 24"	180° 02' 45"	-5.076	-14.157	103131.665532	22804.237170
7-10	-1614.199	-20326.966	4.402	250° 11' 55"	179° 54' 31"	-4.880	-13.601	99195.594080	21954.720599
7-11	-1615.690	-20331.108	2.997	284° 31' 52"	214° 19' 57"	-0.739	-7.042	15024.688812	11377.688980
7-12	-1614.938	-20334.008	10.855	317° 46' 13"	213° 14' 21"	8.789	-10.196	-178715.596312	16465.907848
7-1	-1606.901	-20341.304	9.693	317° 39' 58"	179° 53' 45"	15.203	-13.824	-309248.844712	22213.799424
6-10	-1599.735	-20347.832	9.177	317° 39' 30"	179° 59' 32"	13.949	-12.709	-283831.908568	20331.032115

参考資料

※記載内容は換地処分当時のものです。 上尾市

点名	Xn	Yn	距離	方向角	測角	Xn+1—Xn-1	Yn+1—Yn-1	Yn*(Xn+1—Xn-1)	Xn*(Yn+1—Yn-1)
6-1	-1592.952	-20354.013	1.917	318°05'01"	180°25'31"	8.209	-7.461	-167086.092717	11885.014872
K22	-1591.526	-20355.293	10.974	312°42'32"	174°37'31"	8.869	-9.344	-180531.093617	14871.218944
K21	-1584.083	-20363.357	3.752	309°36'17"	176°53'45"	9.835	-10.955	-200273.616095	17353.629265
K20	-1581.691	-20366.248	11.844	318°34'56"	188°58'39"	11.274	-10.726	-229609.079952	16965.217666
K19	-1572.809	-20374.083	21.401	315°37'08"	177°02'12"	24.177	-22.803	-492584.204691	35864.763627
K18	-1557.514	-20389.051	14.959	315°40'22"	180°03'14"	25.996	-25.421	-530033.769796	39593.563394
5-4	-1546.813	-20399.504	13.216	315°38'57"	179°58'35"	20.152	-19.692	-411090.804608	30459.841596
5-1	-1537.362	-20408.743	2.990	2°30'28"	226°51'31"	12.437	-9.108	-253823.536691	14002.293096
5-2	-1534.376	-20408.612	10.410	225°19'40"	42°49'12"	-4.333	-7.272	88430.515796	11157.982272

倍面積	2542.412403
面積	1271.2062015
地積	1271.20㎡